

# Whitewater



## Community Newsletter

### AUGUST 2025





# COMMUNITY CALENDAR

## AUGUST 2025

SUN	MON	TUE	WED	THUR	FRI	SAT
<b>10</b>	<b>11</b> RMS Supply Drop & RES Open House 4:00PM USD 206 Dist. Brd Mtg. 7p @ District Office	<b>12</b> Senior Potluck 9a-3p @ Am. Legion	<b>13</b> USD 206 First Day of School	<b>14</b> Public Forum Budget & Taxes @ the Library, 7pm	<b>15</b>	<b>16</b> Farm & Craft Market 9am on Main St.
<b>17</b>	<b>18</b> Fall Sports - Practices Begin  Fire Board Mtg. 7p @ Dist. Office	<b>19</b> RMS Picnic & Open House 5:30PM	<b>20</b> Berean Academy First Day of School  WW Volunteer Fire Meeting 7p @ Fire Dept.	<b>21</b> RHS Fall Sports Parents Night 6:00PM	<b>22</b>	<b>23</b>
<b>24</b>	<b>25</b> RNR & BUDGET HEARINGS @ City Building, 6pm  CITY COUNCIL Meeting, 7pm	<b>26</b> Senior Potluck 9a-3p @ Am. Legion Butler & Harvey Co. RNR & BUDGET HEARINGS @ County Courthouses, 6p	<b>27</b>	<b>28</b>	<b>29</b>	<b>30</b>
<b>31</b>						

## SEPTEMBER 2025

SUN	MON	TUE	WED	THUR	FRI	SAT
	<b>1</b>  CITY OFFICE CLOSED	<b>2</b> Library Board Meeting 7p @ Library	<b>3</b> WW Volunteer Fire Meeting 7p @ Fire Dept.	<b>4</b>	<b>5</b>	<b>6</b>
<b>7</b>	<b>8</b> USD 206 RNR & BUDGET HEARINGS @ District Office, 6:30pm USD 206 Dist. Brd Mtg. 7p @ District Office	<b>9</b> Senior Potluck 9a-3p @ Am. Legion	<b>10</b>	<b>11</b>	<b>12</b>	<b>13</b>
<b>14</b>	<b>15</b> Fire Board Mtg. 7p @ Dist. Office WRCF District RNR & BUDGET HEARINGS @ Fire District Office, 8pm	<b>16</b>	<b>17</b> WW Volunteer Fire Meeting 7p @ Fire Dept.	<b>18</b>	<b>19</b>	<b>20</b>
<b>21</b>	<b>22</b>  CITY COUNCIL Meeting, 7pm	<b>23</b> Senior Potluck 9a-3p @ Am. Legion	<b>24</b>	<b>25</b>	<b>26</b>	<b>27</b>
<b>28</b>	<b>29</b>	<b>30</b>				

Visit our website for more calendar events and up to date schedules.

**WHITEWATERKS.GOV**

Submit Calendar and Newsletter information to  
cityclerk@whitewaterks.gov





# City Council Meeting

## Highlights from 7/28/25

Full minutes will be posted upon approval: [whitewaterks.gov](http://whitewaterks.gov)

- Presentation on having Aflac as supplemental benefit option, presented by Jerry Gentry Jr. & Zach Stenzel.
- Planning & Zoning President Mike Claassen presented a cost estimate of approximately \$6,700 for training, updated maps, forms, and zoning regulation updates. No funds were allocated at this time.
- Elizabeth Herbel is working to bring Girl Scouts back to Whitewater. The Council approved her request to waive fees for using the Scout House and for newsletter advertising.
- The City of Whitewater has hired Daniel McLiney of McLiney and Company as a Municipal Advisor to assist with future project development and bond planning.
- Animal Control Report - A new process on claiming impounded animals has been developed that aligns with city policies also developing a procedure to surrender unclaimed animals.
- Maintenance Report - Lightning struck the water tower and damaged the computer board that monitors water levels, causing no alarms to sound and resulting in low water levels. KDHE issued a boil water advisory, which was lifted two days later after pressure was restored and water passed testing. Road crews have completed their repairs, and the City is now waiting on the County to restripe.
- A public forum will be held on August 14th at 7:00 PM at the Library to discuss the budget, taxes, and answer questions from Whitewater residents. A representative from the Loyd Group will be in attendance.
- The Council voted to formally accept a perpetual easement agreement with American Tower for a lump sum payment of \$77,000. It was agreed that the funds should be invested to allow them to grow and support future needs.
- The Council reviewed budget requests from the Library, Cemetery, and Parks & Rec. The Library's request was approved, while the others were discussed but deferred for consideration during the 2026 Budget planning.

**RNR & BUDGET HEARINGS: MONDAY, AUGUST 25 @ 6:00PM**

**NEXT MEETING: MONDAY, AUGUST 25 @ 7:00PM**

*All are welcome at City Council meetings.*

*Public Comment time is available at the beginning of each meeting;*

*Please keep it to 5 minutes per person when addressing the council.*

*To discuss a specific topic, please contact the City Clerk to be placed on the agenda.*

**On the Agenda for August:** RNR & Budget Hearings @ 6pm & Scout House Options

# MILL LEVY CHOICES: IMPACTS ON CITIZENS & THE CITY

## The City of Whitewater

2024	2025	2026
55.802	55.809	54.052 <sub>(RNR)</sub>

### LOWER MILL LEVY TO RNR (54.052)

#### IMPACT ON CITIZENS:

- ✓ No tax increase notice required
- ✓ Property owners will see no mill-rate-based increase
- ✓ May gain public favor

#### IMPACT ON CITY:

- ✗ No allowance for rising costs
- ✗ A budget shortfall unless services are reduced elsewhere: payroll, police, projects
- ✗ Limits growth or emergency flexibility

### KEEP MILL LEVY AT 55.809

#### IMPACT ON CITIZENS:

- ✗ Taxes will go up
- ✗ Public hearing and notice required by law
- ✗ Viewed as a "Tax Hike"

#### IMPACT ON CITY:

- ✓ Provides for future cost increases
- ✓ Preserves ability to maintain or improve services
- ✓ Better positioned for financial stability

**Butler County, Kansas**



# What's a Mill Levy?

## HOW IT WORKS

Whitewater's mill levy for 2025 is 55.809, meaning for every \$1,000 of taxable house value, the city collects about \$55.81.



## EXAMPLE TIME!

If your house is taxed at \$10,000, the City of Whitewater would get \$558.10 from that tax payment you made.



## WHY IT MATTERS

Your tax money helps our town stay safe, work well, and grow strong.



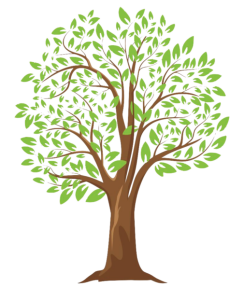
Whitewater/ACOM, Friendly/MILL LevyInfo25.PDF

# Cottonwood Pediatrics

The **FIRST** and **ONLY** Pediatric Clinic in the region

## Backpack Safety Tips:

- Match your child's size to the backpack. Bigger is not better. The main compartment of the backpack should go from waist level to 1-2 inches below the shoulder.
- Pick a backpack with two padded shoulder straps and a waist or chest strap. Use them all!
- Pack the bag so that most of the weight is at the curve of your child's lower back.
- Backpacks shouldn't weigh more than 15% of your child's body weight. That means a child who weighs 100 pounds should not have a backpack that weighs more than 15 pounds.
- If your child has to lean forward to support the backpack's weight, it's too heavy.



New Patients Welcome

All Local Insurance  
Plans Accepted

For more information visit us at  
[cottonwoodpeds.com](http://cottonwoodpeds.com)

Jon Jantz, MD  
Alyssa Watkins, MD, IBLCE  
Jessica Fisher, MD  
Maureen Entz, APRN, CPNP  
Tarina Gfeller, APRN, CPNP

700 Medical Center Dr, Ste 150  
Newton Kansas 67114  
316-283-7100





# SAVE the DATE

## WHO SETS THE CITY MILL-LEVY?

In Whitewater, the City Council is responsible for setting the city's Mill-Levy each year. This rate determines how much property tax revenue the city collects to fund local services.

## WHAT IS A MILL-LEVY?

A mill is 1/1,000 of a dollar. The Mill-Levy is the rate used to calculate how much property owners pay in local property taxes.

**Example:** A Mill-Levy of 55 means \$55 in taxes for every \$1,000 of taxable property value.

## WHO'S INVOLVED IN THE PROCESS?

<u>Role</u>	<u>What They Do</u>
<b>City Council</b>	• Makes the final decision. Holds public forums and hearings and votes to set the mill-levy.
<b>City Clerk</b>	• Organizes the budget process, schedules forums and hearings, supports budget planning and ensures public notices are met.
<b>City Treasurer</b>	• Tracks city finances, prepares projections, and supports budget planning.
<b>Budget/Audit Firm</b>	• Reviews past spending, helps plan the upcoming budget, and makes sure everything follows state rules.
<b>Butler County Clerk</b>	• Calculates the final mill rate based on the city's requested revenue and certified property values.

## WHEN DOES THIS HAPPEN?

**July – August:** Budget prep, public notice, and hearings

**August:** Public Budget Hearing and (if needed) Revenue Neutral Rate Hearing

**August 25:** Whitewater Council votes to adopt the final budget and tax rate

## HOW CAN YOU GET INVOLVED?

Attend public forums, city council meetings, and hearings to share your thoughts!

Ask questions. Learn where your tax dollars go.

**Your voice matters.**

**NEXT PUBLIC FORUM:** Thursday, August 14th at 7:00 PM

@ the Whitewater Memorial Library





# EVERY YARD COUNTS



*Remington Booster Club Presents:*

## BUY A YARD LINE FUNDRAISER

*\$25/line  
Buy as Many  
as you Like!*

Secure a Yard Line , numbered 1-99. Yard line 1 is at the scoreboard end zone, and yard line 99 is at the west (Meadowlark) end zone.

### WIN BIG!

If the final play of the first or third quarter ends on your yard line, you win \$100.

### MORE CHANCES TO WIN!

Your yard line is yours for all Remington (HS or MS depending on choice), giving you 8 chances to win. [4 home games x 2quarters of winners]

### Details:

- If not all 99 yard lines are sold and the final play of the first or third quarter ends on an unsold yard line, no prize will be awarded.
- The yard line indicated in the official stats at the end of the first and third quarters will determine the winner.
- In case of a touchdown at the end of the first or third quarter, the owner of yard line 3 will receive the prize as that's where the extra point is snapped.
- You do not need to be present to win.

### Refund Policy:

If fewer than 40 lines are sold by 11:59pm on September 2, all money will be refunded. If 40 or more lines are sold but fewer than 99, the remaining yard lines will be sold during the season.

### Important Dates:

- On September 3, a random drawing will assign yard lines, and the results will be emailed to each participant.
- The first RHS home game is September 19<sup>th</sup>.
- The first RMS home game is September 4<sup>th</sup>



2026-2027 BOOSTER CLUB

## Sponsorship Levels

E-Form



If completing this paper form, PLEASE circle your Sponsorship Type (Family or Business) level and complete name and email lines. Please return to any school office by Sept1.

### FAMILY OR INDIVIDUAL BOOSTER LEVELS

<b>\$450</b> PLATINUM +	<b>What's included in the PLATINUM + program?</b> <ul style="list-style-type: none"><li>• Free popcorn AND Water (2) at any home concessions</li><li>• Crew Neck Sweatshirt or 2 T-shirts</li><li>• \$50 Booster Bucks Card</li><li>• Family name in Sports Program</li><li>• Family (Immediate only) Pass, Home games - reg season</li></ul>
<b>\$300</b> PLATINUM	<b>What's included in the GOLD program?</b> <ul style="list-style-type: none"><li>• Free popcorn AND Water (2) at any home concessions</li><li>• T-Shirt</li><li>• \$50 Booster Bucks Card</li><li>• Bronco Village Volunteer Program</li><li>• Name in sports programs</li></ul>
<b>\$150</b> GOLD	<b>What's included in the GOLD program?</b> <ul style="list-style-type: none"><li>• Free popcorn AND Water (2) at any home concessions</li><li>• T-Shirt</li><li>• \$25 Booster Bucks Card</li><li>• Bronco Village Volunteer Program</li><li>• Name in sports programs</li></ul>
<b>\$50</b> SILVER	<b>What's included in the GOLD program?</b> <ul style="list-style-type: none"><li>• Free popcorn AND Water (2) at any home concessions</li><li>• T-Shirt</li><li>• Name in sports programs</li></ul>
<b>\$25</b> BRONZE	<b>What's included in the Bronze program?</b> <ul style="list-style-type: none"><li>• Free popcorn AND Water (2) at any home concessions</li><li>• Bronco Village Volunteer Program</li><li>• Name in sports programs</li></ul>
<b>ANY</b> FRIEND OF BOOSTER CLUB	<b>What's included in the FRIEND of Booster Club?</b> <ul style="list-style-type: none"><li>• Bronco Village Volunteer Program</li></ul>



Please contact boosterclub@usd206.org with any questions.

### BUSINESS BOOSTER LEVELS

<b>\$1000</b> PLATINUM +	<b>What's included in the PLATINUM + program?</b> <ul style="list-style-type: none"><li>• Everything in Platinum level +<ul style="list-style-type: none"><li>◦ Business sign at Baseball &amp; Softball Diamonds</li><li>◦ April-end of July</li><li>◦ 1/2 Page Business Ad in RHS Yearbook+Website</li><li>◦ Hudl Sponsorship: Logo on bottom of Screen</li><li>◦ Includes home football &amp; basketball games</li></ul></li></ul>
<b>\$750</b> PLATINUM	<b>What's included in the PLATINUM program?</b> <ul style="list-style-type: none"><li>• Free popcorn AND Water (2): home concessions</li><li>• Crewneck/Hoodie + T-Shirt</li><li>• \$50 Booster Bucks Card</li><li>• Social/Business Recognition for Home Games</li><li>• Family (Immediate) Pass, Home games - reg season</li><li>• Special Basketball Game recognition</li></ul>
<b>\$500</b> GOLD	<b>What's included in the GOLD program?</b> <ul style="list-style-type: none"><li>• Free popcorn AND Water (2): home concessions</li><li>• Crewneck or Hoodie</li><li>• \$25 Booster Bucks Card</li><li>• Social + Business Recognition for Home Games</li><li>• Biz/Logo Name in sports programs, Social recog.</li></ul>
<b>\$250</b> SILVER	<b>What's included in the SILVER program?</b> <ul style="list-style-type: none"><li>• Free popcorn AND Water (2) at any home concessions</li><li>• T-Shirt x 2</li><li>• Business Recognition for Home Games</li><li>• Biz Logo/Name in sports programs, Social recognition</li></ul>
<b>\$125</b> BRONZE	<b>What's included with the BRONZE program:</b> <ul style="list-style-type: none"><li>• Free popcorn &amp; Water (2) at any home concessions</li><li>• T-Shirt</li><li>• Biz Logo/Name in sports programs, Social recognition</li></ul>

Business or Family Name: \_\_\_\_\_

Business/Personal Email: \_\_\_\_\_

Sponsorship Level:

☐ Platinum +  
☐ Platinum  
☐ Silver  
☐ Gold  
☐ Bronze

Payment Method:



# MOMS IN TOUCH

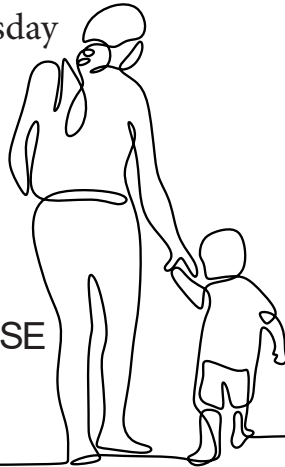
*Contributing to & for Our Community*

Any mom interested  
in praying for the  
Remington School District  
Please come join and  
participate with us.

Every 1st & 3rd Wednesday  
of the month at 9:00am



BRUHN COFFEE HOUSE  
216 S. Main St.  
Whitewater, KS



# WHITewater AREA FOOD PANTRY

216 South Main • Bruhn Coffee House

## OPEN

**Every Monday**

**4:30 - 5:30pm**

(Excluding Holidays)

The WAFP is for anyone  
living in the  
Remington USD 206 area.

Order forms can be found on the  
Whitewater Memorial Library website,  
their lobby & the Whitewater Pizza Parlor.

## Countryaid Vet Service PA

11360 NW Meadowlark Rd, Whitewater, KS 67154



### HOURS

**Monday - Friday**

8AM - NOON; 1 - 5PM

**Saturday**

9AM - NOON; 1 - 3PM

**Sunday**

CLOSED



**WEBSITE:**

[countryaidvetservice.com](http://countryaidvetservice.com)

we are also on Facebook

**316-799-2740**

# Takeaway Travel

## WHY WORK WITH A TRAVEL AGENT?

- Expert advice
- Save time and money
- Personalized service
- Support before, during, and after your trip

Scan to  
subscribe to  
our newsletter

[TEMPLINTRAVEL.NET](http://TEMPLINTRAVEL.NET)



# Find Your Balance

WITH BONNIE BREWER  
FAMILY CONSUMER SCIENCES AGENT  
K-STATE RESEARCH & EXTENSION



FAMILY LIFE - HOLISTIC WELLNESS - NUTRITION - RELATIONSHIPS - SELF-CARE

## THE REAL SCHOOL SUPPLY WISH LIST

August is here, meaning a new school year.

As you find yourself seeking a way to get back into the school routine, remember the following real school supply wish list:

- Read with your children – reading helps children build language skills, learn about the world, develop empathy and emotional awareness, and provides an opportunity for you to connect with your child. Not only that, it grows and strengthens connections in the brain.
- Play games together – promotes family quality time, face-to-face interactions, and develops the 6-traits of strong families.
- Enforce rules and schedules – creates structure, consistency, predictability and follow through. All of these are crucial elements for the health of a developing child.
- Assign chores – help children learn life skills, develop responsibility, and contribute to the family.
- Cook meals together – promotes the learning of important life skills, motor skills, confidence, creativity, food knowledge, and math skills.
- Have conversations, even silly ones – promotes word learning, sharpens the ability to pay attention, and deeply strengthens their mental health. Make the conversations POSITIVE!
- LIMIT SCREEN TIME – prevents obesity, reduces anxiety and depression, increases focus, improves emotional well-being, creates face-to-faces social connection, and helps children perform better in school.
- Encourage and praise effort – boosts self-esteems, fosters a growth mindset, strengthens relationships, and motivates new endeavors.
- Be mindful of what they hear you say – you are a role model. Youth are more likely to behave in a kind, honest, and considerate way if you do. Little pitchers have big ears!
- Practice coping techniques for tough situations – helps children deal with difficult situations by helping them manage their emotions, develop resiliency, and feel more in control of their responses to stressful situations.
- Communicate respectfully and tactfully with teachers – increases student success, builds trust, provides feedback, and can create motivation for success.



**AUTOMOTIVE & DIESEL REPAIR**

**Today's Repair Technology  
With the Service of Yesteryear!**

>10 years of experience in the industry

- ASE Certified
- DOT Certified
- Full A/C Service
- Oil Change & Full Vehicle Maintenance
- Brakes
- Computer, Engine, Drivetrain Diagnostics and Repair
- Full Vehicle Inspections

**Shop Hours:**  
*Monday-Friday, 8am - 5:30pm*

**TREVOR BERGEN**  
7525 S. Webb Rd. • NEWTON, KS 67114  
**316-832-5247**



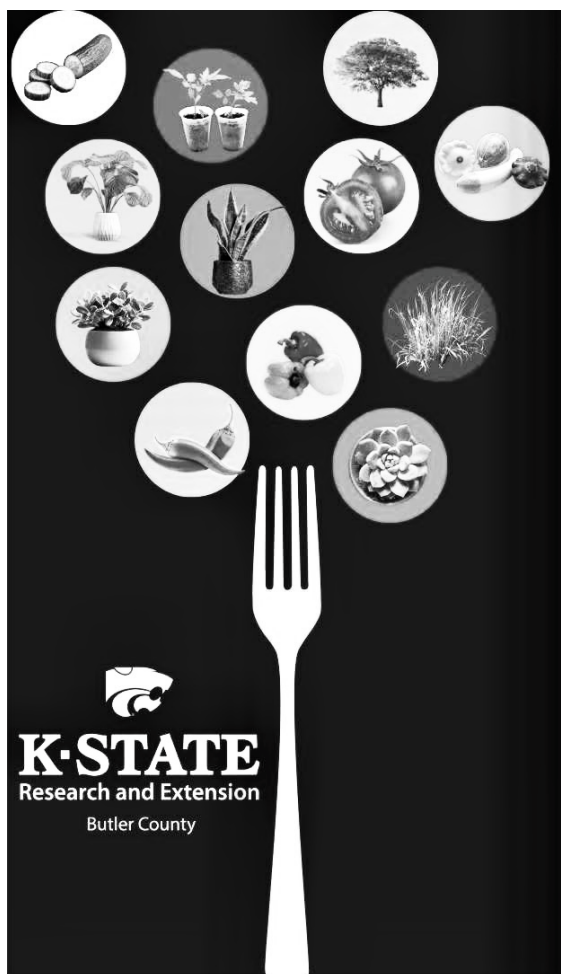
**American Concept Construction**  
**Your Home, Transformed.**

**Quality Residential Remodeling**  
*Specializing in Walk-in Showers and  
Bathroom Remodels*

View photos of our work at:  
[www.americanconceptconstruction.com](http://www.americanconceptconstruction.com)

Licensed & Insured • Call, Text, or Email  
**316-416-7376**  
[info@americanconceptconstruction.com](mailto:info@americanconceptconstruction.com)





## LUNCH & LEARN

Bring your lunch and join Horticulture Agent, Calla Edwards, over the lunch hour during our monthly Lunch & Learn Program. This will be held over the lunch hour and will cover a variety of horticulture topics.

**August 13<sup>th</sup>**  
**12:15-12:45 p.m.**

**Andover Public Library**  
1511 E Central Ave  
Andover, KS

**August Topic: Cut Flowers**

Start your own cut flower garden to bring the beauty of flowers indoors! This session covers the basics of establishing a cut flower garden. Learn ideas for preparing soil, seed starting, flower varieties, irrigation set-up, maintenance, and even marketing tips for your floriferous crops.

Kansas State University Agricultural Experiment Station and Cooperative Extension Service  
K-State Research and Extension is an equal opportunity provider and employer.

## LUNCH & LEARN

Bring your lunch and join Horticulture Agent, Calla Edwards, over the lunch hour during our monthly Lunch & Learn Program. This will be held over the lunch hour and will cover a variety of horticulture topics.

**August 18<sup>th</sup>**  
**12:15-12:45 p.m.**

**Lori's EmporiYum Lab!**  
1604 Custer Ln.  
Augusta, KS

**August Topic: Squash &  
How to Use It**

Squash is a very fragile vegetable in the garden. Learn tips on preventing insect issues & recipes to use your surplus of squash this season.

Kansas State University Agricultural Experiment Station and Cooperative Extension Service  
K-State Research and Extension is an equal opportunity provider and employer.

## Dump-It Dumpsters

(316) 889-1080  
Dumpit@wheatstate.com

**Serving Whitewater,  
Potwin and surrounding areas**  
*Locally owned & operated.*



**10 & 20 Yard Roll-Off Dumpsters**

**How long will you need a dumpster?**  
**We're flexible.**

**Give Leon a call!**



**ENGEL**  
HEAT AND AIR

**Licensed & Insured**  
**Quality Installation**  
**Service All Brands**

**Byrant Authorized Dealer**  
**24 Hour Service**  
**Low Cost**  
**No Mileage Charges**

*Free Estimates*  
**316-722-6899**





Ralph and Debora Claassen  
were married on August 15, 1975 at First Church of the  
Nazarene in Grand Island, Nebraska.

Residents of Whitewater, KS, Ralph and Debora have built a  
rich life rooted in faith, hard work, and family. Together, they've  
spent their married years farming, serving in church and  
community with devotion, and joyfully raising their 4 children  
and 17 grandchildren.

Ralph and Debora Claassen invite you to join them in  
celebrating this milestone moment at a special open house,  
hosted by their children.

**Sunday, August 17 // 3-5PM // Emmaus Mennonite Church**



**August 23, 2025**

7:00 - Softball Tournament (Veteran's Park)  
8:00 - 2:00 - Tyler Harvey Memorial Car Show  
8:00 - Vendors open up  
9:15 - Boy Scouts Flag Retirement (downtown)  
10:00 - Parade  
11:00 - Kid's games, Bouncy Houses, Paddle Wheel  
11:30 - Quarter Toss - Fire Dept.  
12:00 - Free Watermelon (shelterhouse)  
1:00 - 5:00 - Puzzle Competition (Community House downstairs)  
1:00 - 8:30 - Bluegrass Festival (Community House upstairs)  
2:00 p.m. - Car Show awards  
3:15 - Cornhole Tournament (King Park)  
4:30 - Raffle Drawing (gazebo)  
5:30 - Wheat State Technology Free Sloppy Joe (shelterhouse)  
6:00 - Free Watermelon (shelterhouse)  
8:00 - 10:00 - Kid's Dance  
8:00 - 12:00 - Street Dance



- 1:00 - 3:00 - Sunflower Station Bluegrass Band
- 3:30 - 5:00 - Tallgrass Express with Annie Wilson
- 5:00 Wheat State Technologies 75<sup>th</sup> Anniversary  
Sloppy Joe Feed
- 5:30 - Bert's Bad Bottom Bluegrass Band
- 6:00 - Free Watermelon
- 6:30 - 8:30 p.m. - Beyond Reach

**Saturday, August 23rd**  
**Potwin Community House Historic Theater**  
**201 N. Miller**  
**Free Attendance!**





**Save 20-50% ON  
GROCERIES COMPARED  
TO OTHER STORES**

**Granddad's**  
DISCOUNT GROCERIES

**Buy More. Spend Less.**

**Order Online  
Local Pick-up**

[www.GranddadsGroceries.com](http://www.GranddadsGroceries.com)

**Delivery to this area!**

**DROP LOCATION:**

*Whitewater Community Church*

**ORDER FREQUENCY:** *Monthly*

**CONTACT:** *Benjamin Newton, (620) 878-0298*

**Make an account today to join our  
community!**



[www.GranddadsGroceries.com/how-it-works](http://www.GranddadsGroceries.com/how-it-works)



# WHITEWATER MEMORIAL LIBRARY

118 East Topeka, Whitewater, Kansas 67154 | Phone: 316-799-2471 | Fax: 316-799-1099  
library.whitewaterks@gmail.com | www.whitewaterlib.info | www.facebook.com/whitewaterlibrary

## HOURS

Monday: 1:30 - 8:00 pm  
Tuesday: 10:00 am - 5:00 pm  
Wednesday: 10:00 am - 5:00 pm  
Thursday: 1:30 - 8:00 pm  
Friday: 10:00 am - 5:00 pm  
Saturday: 10:00 am - 1:00 pm  
Sunday: CLOSED

## STAFF

Director: Jean Thiessen  
Admin Specialist: Joyce Bevan  
Social Media: Janelle Goodrich  
Summer Intern: Gianna Van Zelfden  
Student Assistant: Clara Stoesz

## BOARD OF TRUSTEES

President:  
Vice President:  
Secretary: Cherry Stucky  
Treasurer: Cindy Claassen  
Member: Faith Slaymaker  
Member: Pam Entz  
Member: Laura Wyant  
Member: LeeAnn Groben

## FRIENDS OF THE LIBRARY

President : Colleen Floyd  
Vice President: Karen Hujing  
Secretary: Paulette Claassen  
Treasurer: Nancy Day  
Member: Patty King  
Member: Betty Hansen

## CONGRATULATIONS TO OUR GRAND PRIZE WINNERS FOR SUMMER READING 2025!



Lakyn G. - Motor Master; Kenzie P. - Stacking Game;  
Carina B. - Body Bumpers/Water Balloons; Jana B. - Sand Art  
Drew J. - Hey Clay Animal Set

## CONGRATULATIONS TO OUR LAST GUESSING JAR WINNER OF THE SUMMER!

Jace G. guessed  
290 mini books  
and the correct  
number  
was 286!



## SUMMER READING BY THE NUMBERS

- \*415 registered participants
- \*230 completed their reading goals
- \*\$2,300 funneled back into the Whitewater economy through Gift Certificate Prizes
- \*300 Kick-off Attendees
- \*5 Story Times
- \*6 Craft Events
- \*11 New Library Cards Issued
- \*2,199 Library Visitors



2025 FREDERIC REMINGTON FESTIVAL

# Parade Contest

---

**THEME: CIRCUS**

**DECORATE A TRAILER, TRACTOR, VEHICLE,  
UTV, GOLF CART, BICYCLE OR YOURSELF  
WITH ANYTHING CIRCUS-THEMED.**

**: \$100 CASH PRIZE! :**

*\*\*2nd and 3rd place cash prizes too!*

**\*TAKE NOTE OF NEW TIMES\***

**LINE UP: 10:00 A.M.**

**PARADE BEGINS: 10:30 A.M.**

*The 2026 parade theme will be a patriotic/historic theme  
in celebration of America's 250th birthday!*





# FREDERIC REMINGTON FESTIVAL

## *"A Celebration of Art & Ag"*



**OCTOBER 4-6, 2025**

### **JOIN THE FUN BEHIND THE SCENES!**

Help us keep one of the most beloved traditions alive:  
"Pumpkin Painting" is in need  
of a few friendly faces to help run this fun and festive activity.

### **DOWNTOWN DECORATORS NEEDED!**

We'd love help decorating 4-5 key spots around downtown.  
Think: straw bales, mums, pumpkins, and more.

### **GOT A GREAT IDEA FOR THE FESTIVAL?**

**We'd love to hear it!**

Volunteer or Talk to:

Sharon Entz, Jason Barnes, Darryl Claassen, Sandra Jensen, or Jean Thiessen

**FIND OUT MORE AS INFORMATION BECOMES AVAILABLE AT:**



[whitewaterks.gov/frederic-remington-festival](http://whitewaterks.gov/frederic-remington-festival) ,

OR [www.facebook.com/FredericRemingtonFestival/](https://www.facebook.com/FredericRemingtonFestival/)



**Scan me!**







# Scanning Our Community

## for Art and Crafts to Display at the

### FREDERIC REMINGTON FESTIVAL


*"A Celebration of Art & Ag"*

October 4, 2025

PAINTING • SKETCHING • NEEDLEWORK  
LEATHERWORK • SCULPTURES • IRONWORK  
WOODWORK • PHOTOGRAPHY • PAPER CRAFT  
FABRIC ART • GLASS ART • & MORE!

**OUR COMMUNITY LOVES TO SHARE BEAUTY & CRAFTSMANSHIP. ANY MEDIUM OF CREATIVE ENDEAVORS IS ENCOURAGED. ENCOURAGE YOUR FAMILY AND NEIGHBORS TO SHARE THEIR MASTERPIECES!**

Register your art submissions at the Fred Fest page found on the City of Whitewater website after September 1, 2025. Questions? Text Cherry Stucky at 316-217-4091.

## JOIN SCOUTING

hosted by  
Scout Troop 225

# FAMILY FUN NIGHT

**Monday, August 25 - 6:00PM**

**@ the Scout House,  
(500 E. Topeka,  
next to field #3,  
Whitewater, Kansas)**

Join us as we embark on a journey of exploration, service, and leadership. Troop 225 is more than a troop—it's a family.



## Join Girl Scouts!

### Girl Scouts®

**Meet & Greet Information Meeting**  
Thursday, October 2, 2025, 6 p.m.  
Scout House in Whitewater, 500 E. Topeka

- Information about the troop
- Fun activities for girls K-4
- Join at the meeting or just ask questions

**Want to join prior to the Meet & Greet or have questions?**

- Contact Elizabeth Herbel, Troop Leader  
elizabeth.herbel@yahoo.com  
316-213-8160

**First Troop Meeting!**  
October 16, 2025, 6 p.m.  
Scout House in Whitewater, 500 E. Topeka

- Get to know each other activities
- Intro to Girl Scouts activities
- Able to join anytime!



## **WHO ARE WE:**

My name is Jenifer Klaassen. I grew up in the Whitewater area and graduated from Remington High School. I have been in healthcare since 2002. I am a board certified Family Nurse Practitioner with certifications in cancer, advanced life support, genetics, and functional medicine.

My passion has always been to help kids live up to their fullest potential which was hard in traditional medicine so I decided to open my own clinic in March 2025 where care is based on each individual and their needs.

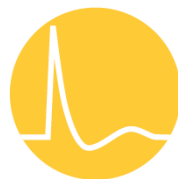
My clinic is a direct care clinic, meaning you pay a monthly membership fee for visits. This takes out the ability of insurance companies to determine what you and your child needs. Insurance can still be used to cover labs, medicines, imaging, etc or I have deeply discounted prices if you don't have insurance. Go to our website or call to make an appointment!



## **WHAT WE DO:**

1. Primary Care- checkups, sick visits, minor procedures, injuries, wounds, etc!
2. Functional Medicine- this is “root cause” medicine. We look into the actual cause of you or your child's concerns and treat them at the root preferably with natural alternatives if possible! Specializing in ADHD, Autism, Stomach issues, headaches, anxiety, and depression.
3. Sports Optimization- Giving athletes the best performance with a free genetic test, genetic based nutrition optimization, and fitness personalization.
4. Youth Weight Management program- Helping those struggling with weight at younger ages to reach their optimal potential through genetics and personal health coaching. This can be too little or too much weight.
5. SOFTWAVE TRT- Like a stem cell injection WITHOUT the injection! This is revolutionary technology meant to treat pain, inflammation, and injury. ALL AGES TREATED FOR SOFTWAVE!

12627 E Central Ste 306  
Wichita, KS 67206  
316-535-7676  
[www.peakpediatrics.us](http://www.peakpediatrics.us)  
[www.softwavetr.com](http://www.softwavetr.com)



**SoftWave**  
Tissue Regeneration Technologies



# **El Dorado Water Department: Free Chlorine Disinfection Notice**

## **August 4–31, 2025**

The City of El Dorado will use free chlorine for water disinfection from August 4 to August 31, 2025, to maintain a healthy water system, as recommended by the Kansas Department of Health and Environment.

### **What to Expect:**

- You may notice a chlorine taste or smell in the water. This is normal, and the water is safe to drink.
- To reduce chlorine taste or odor, use an affordable faucet-mounted filter or chill a pitcher of water in the refrigerator.
- Fire hydrant flushing may cause cloudy water, air bubbles, or slight pressure changes. Run your faucet until the water clears, and clean faucet screens if needed.

**After August 31:** The system will return to using chloramines, a milder disinfectant.

### **Special Notes:**

Dialysis patients: Ensure free chlorine is fully neutralized and consult your doctor.  
Aquarium owners: Monitor chlorine levels in tap water.

## **COMMUNITY NEWS**

# **NEWS ABOUT YOUR WATER**

**EL DORADO**  
KANSAS



**El Dorado's annual free-chlorine disinfection begins August 4th through August 31st.**



**The Kansas Department of Health & Environment recommends this process to ensure the highest quality of water.**



**The water is safe to drink, and the chlorine odor you may notice should be gone in a few weeks.**

**Have questions?  
Call (316) 322-4411**



BOXHOLDER  
Whitewater, KS 67154

Bulk Rate  
US Postage PAID  
Whitewater, KS  
Permit No. 13

201 S. Elm St.  
P.O. Box 149  
Whitewater, KS 67154



**VINTAGE**  
BANK KANSAS  
COMMUNITY BANKING • INSURANCE AGENCY  
*Moving Through*  
THE FUTURE WITH YOU.

